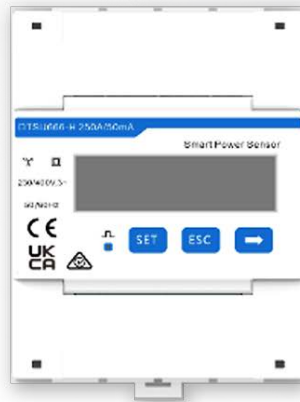


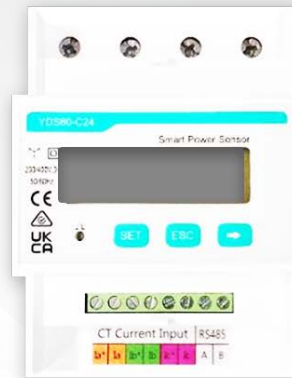
SMART POWER SENSOR

Model: SmartPS-250A-T0

DTSU666-H 250A/50mA



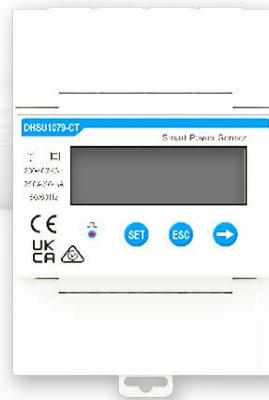
YDS60-C24



DTSU71



DHSU1079-CT



Accurate
Class | measurement
accuracy



Simple & Easy
LCD display, easy to set
and check



Energy Efficient
Overall power
consumption ≤ 1.5 W

SmartPS-250A-T0

Technical Specifications

Technical Specification	SmartPS-250A-T0			
	DTSU666-H 250A/50mA	YDS60-C24	DTSU71	DHSU1079-CT
Manufacturer	CHINT	YADA	LINYANG	WISDOM
General Specification				
Dimensions (H x W x D)	100mm x 72mm x 65.5mm	101mm x 72mm x 66mm	100mm x 72mm x 66mm	99mm x 72mm x 66mm
Mounting type	DIN35 Rail			
Weight (including cables)	0.3kg	0.285kg	0.248kg	0.26kg
Power Supply				
Power grid type	3P3W/3P4W			
Input voltage (phase voltage)	230 V AC/400 V AC			
Power consumption	<1.5W			
Measurement Range				
Line voltage	304V-500V			
Phase voltage	176 V AC-288 V AC			
Current	0-250A			
Measurement Accuracy				
Current/Voltage	±0.5%			
Power/Energy	±1%			
Frequency	±0.01 Hz			
Communication				
Interface	RS485			
Baud rate	4800/9600(Default)/19200/115200			
Communication protocol	Modbus-RTU			
Environment				
Operating temperature range	-25°C to +60°C	-25°C to +60°C	-25°C to +60°C	-25°C to +60°C
Storage temperature range	-40°C to +85°C	-40°C to +85°C	-35°C to +70°C	-40°C to +85°C
Operating humidity	5% RH-95% RH (non-condensing)			
Others				
Accessories	RS485 Cable (10 m / 33 ft.)			
	3 CT 250 A/50 mA (5 m / 16.4 ft.)			

Disclaimer: The preceding values are measured by an internal laboratory of Huawei in a specific environment. The actual values may vary with products, software versions, usage conditions, and environmental factors.